



KIA Genuine Accessories

Vehicle Model	Sorento	Accessory	Rear Bumper Protector
Model Year	2014~	Difficulty	(B)
Part No.	2PF31 AC500		

- Accessory Installation

Note: Difficulty stated above reflects the minimum level of expertise required to install the accessory
 (A) Customer (B) Dealer Technician (C) Master Technician

Instructional Symbols / Definitions

	Denotes warnings that may lead to serious physical injury or vehicle damage.		Denotes quality processes to be checked prior to moving to the next step.	Denotes safety equipment required to be used such as a mask, goggles, rubber gloves, and hearing protection.	
	Denotes cautions to be taken to avoid physical injury or electronic component damage.		Denotes specific tools that are necessary to complete the step.		
	Denotes cautions to be taken to avoid vehicle and component damage.		Denotes instructional steps necessary to complete the process.		
				Mask	Goggles
				Rubber Gloves	Hearing Protection

Basic Required Hand Tools

50/50 mix of Isopropyl Alcohol (70%) and Water	Power Drill	Drill-Bit (5mm, 3/16")	Rubber Roller	Clean Cloth	Air Gun
Rivet Gun	Drill Stop	Masking Tape			

Notes to the Installer:

Read the entire installation pamphlet prior to beginning the installation of the accessory.

Ensure that the vehicle is properly protected in the area that the accessory is to be installed.

To prevent vehicle damage, never place tools on top of painted surfaces, seats, dash pad, console or floor carpet / mat.

Always wear appropriate safety gear to include gloves and eye protection when required.

Temperature of rear bumper protector and vehicle must be between 60°F and 110°F prior to installation.


KIA Genuine Accessories

Kit Overview



No.	Qty.	Description
1	1	Rear Bumper Protector Body
2	1	Rear Bumper Protector Cover
3	1	Hardware Bag

Hardware Overview

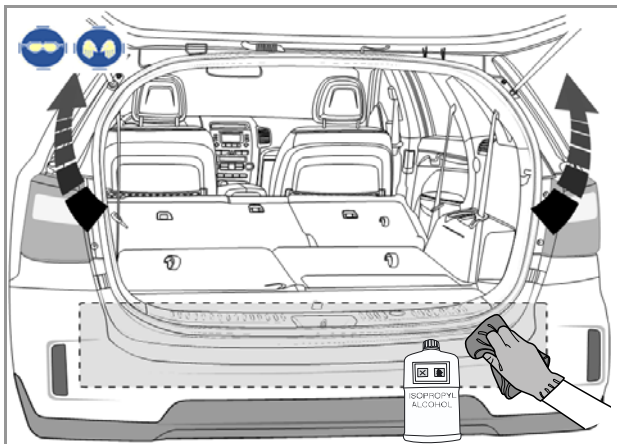
A	
9	Rivet Pin

B	
1	Promoter

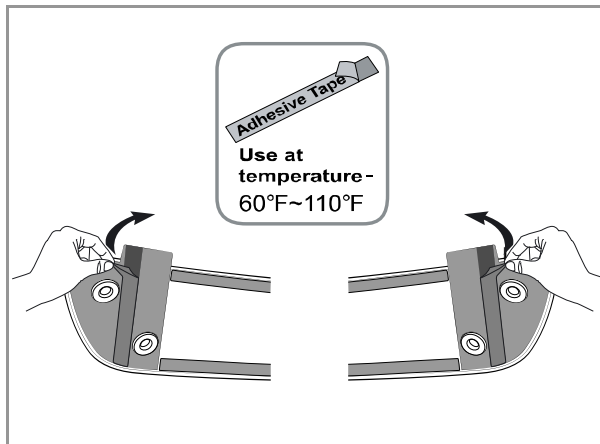
C	
1	Instructions

Hardware Kit Total
11

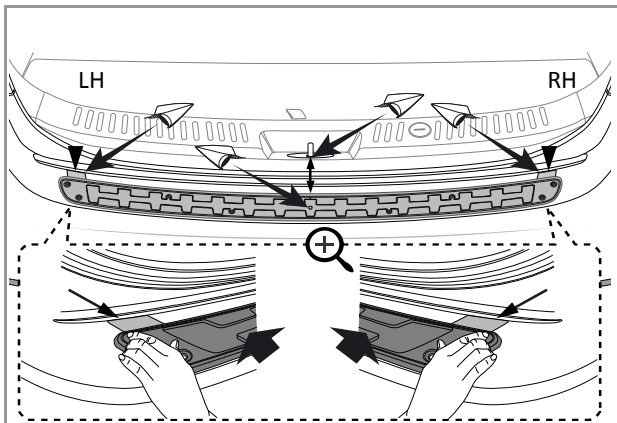
KIA Genuine Accessories



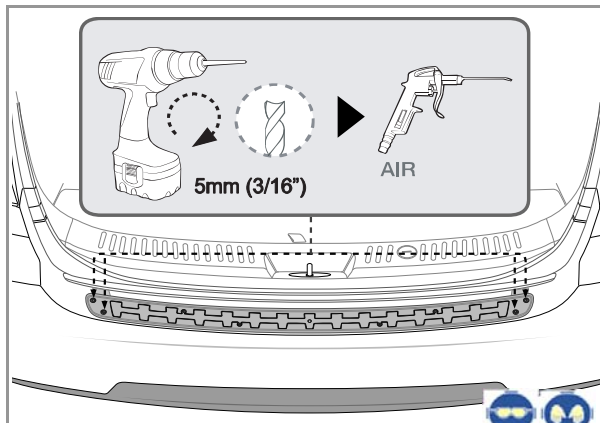
	50/50 Mix of Isopropyl Alcohol (70%) & Water and Clean Cloth	1
N O T E	1. Open the tailgate. 2. Clean the rear bumper with a 50/50 mix of isopropyl alcohol (70%) & water and a clean cloth, as shown in the drawing.	
	Ensure that the rear bumper surface is clean and dry.	



		2
N O T E	1. Peel away the left and right adhesive tape backings of the side templates on the backside of the rear bumper protector body, as shown in the drawing.	

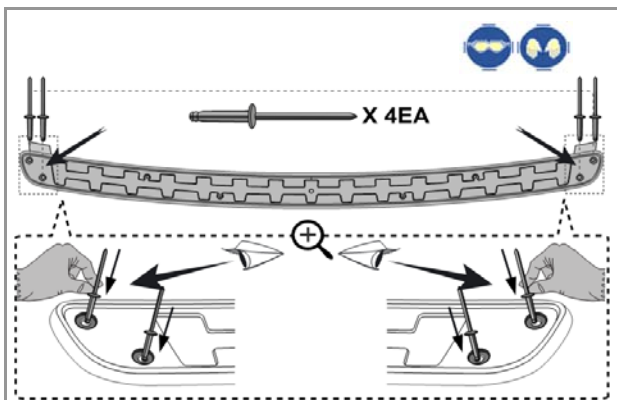


		3
N O T E	1. Carefully position the rear bumper protector body to the rear bumper by aligning the center hole with the rear hatch striker. 2. While maintaining the position of the rear bumper protector body, align the side templates to the character line of the rear bumper as shown.	
	Make sure that the surface of the template is flush with the surface of the rear bumper by pressing down on it with your finger.	



	Power Drill, Drill-Bit (5mm, 3/16"), Drill Stop and Air Gun	4
N O T E	1. While maintaining the aligned position, use the rear bumper protector body as a template and drill four (4) outer holes through the rear bumper using a 5mm or 3/16" drill bit & drill stop set at 13mm or 1/2". 2. Use an air gun to remove any debris from the rear bumper protector body and rear bumper. 3. Do not remove the rear bumper protector body.	
	Be careful not to shift the position of the rear bumper protector body while drilling. Make sure not to damage the rear bumper protector body while drilling.	

KIA Genuine Accessories

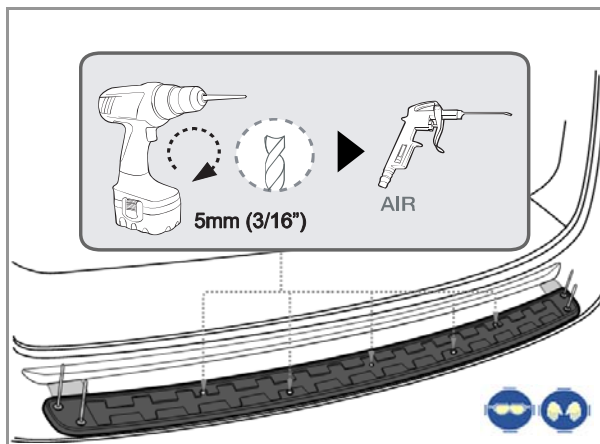



 **5**

NOTE

1. Insert four (4) provided rivet pins through the four (4) rear bumper protector body side holes and into the four (4) holes previously drilled in the rear bumper as shown.


 Do not rivet the pins.

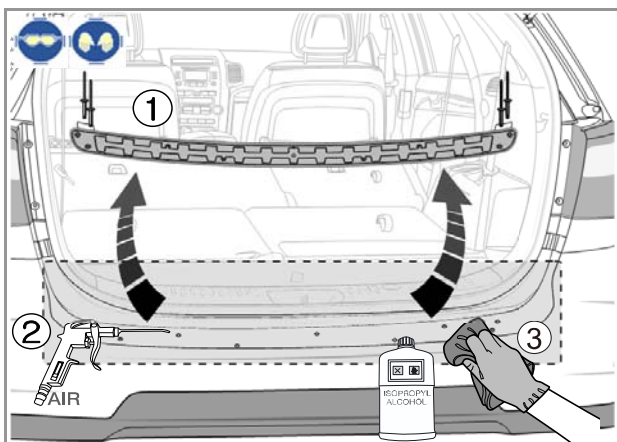



 Power Drill, Drill-Bit (5mm, 3/16"), Drill Stop and Air Gun **6**

NOTE

1. While maintaining the aligned position, use the rear bumper protector body as a template and drill five (5) inner holes through the rear bumper using a 5mm or 3/16" drill bit & drill stop set at 13mm or 1/2".
2. Use an air gun to remove any debris from the rear bumper protector body and rear bumper.


 Be careful to not shift the position of the rear bumper protector body while drilling.
Make sure to not damage the rear bumper protector body or vehicle while drilling.

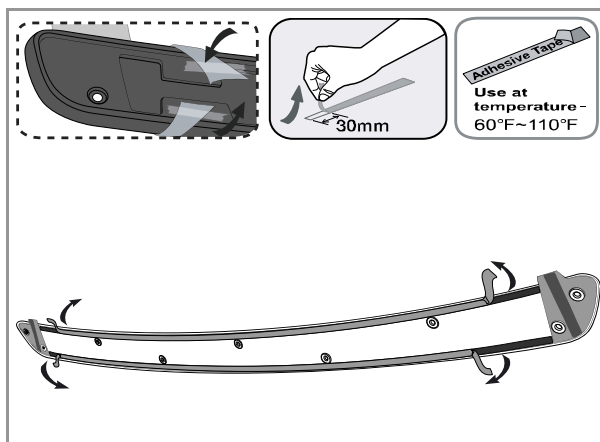



 50/50 Mix of Isopropyl Alcohol (70%) & Water, Clean Cloth, and Air Gun **7**

NOTE

1. Remove the rivet pins and rear bumper protector body from the rear bumper.
2. Use an air gun to remove any debris from the holes and rear bumper.
3. Clean the rear bumper with a 50/50 mix of isopropyl alcohol (70%) & water as indicated in the drawing.


 Ensure that the rear bumper surface is completely clean and dry before proceeding to the next step.



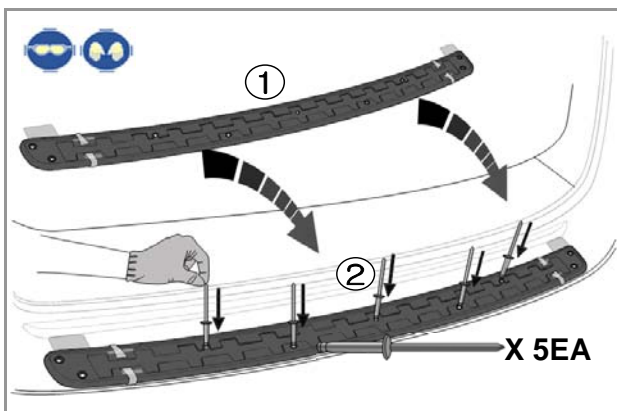
 Masking Tape **8**

NOTE

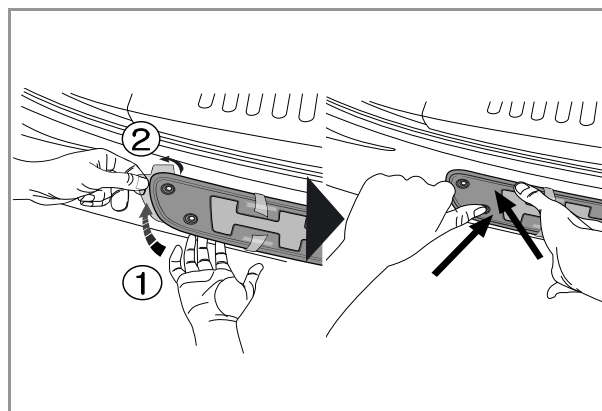
1. Slightly peel away 30mm of the adhesive tape backing from each end of the rear bumper protector body as shown.
2. Use masking tape to hold the tip of the adhesive tape backing from the adhesive tape to the upper surface of the rear bumper protector body as shown in the drawing.

 Be careful not to touch or contaminate the surface of the adhesive tape.
Make sure the installation temperature of the rear bumper protector body & bumper is between 60°F & 110°F.

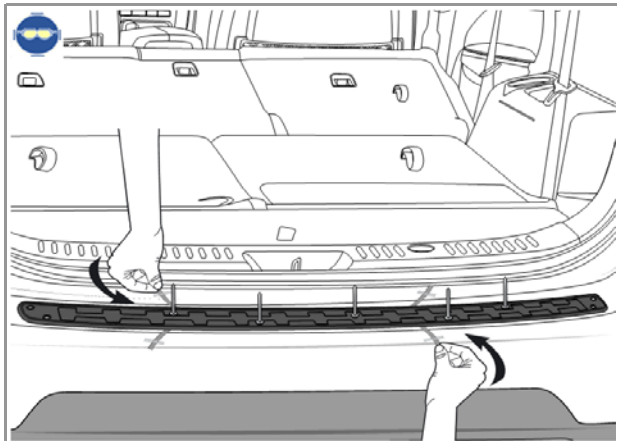
KIA Genuine Accessories



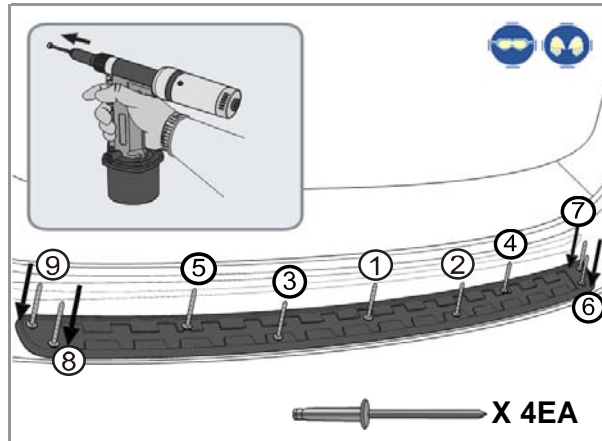
		9
NOTE	<ol style="list-style-type: none"> 1. Place the rear bumper protector body onto the rear bumper making sure the nine (9) holes are properly aligned and that the four (4) adhesive tape backings are exposed. 2. Insert five (5) provided rivet pins into the inside holes as shown in the drawing. 	
	Make sure the holes are properly aligned. Do not rivet the pins.	



		10
NOTE	<ol style="list-style-type: none"> 1. Remove the side templates from each end of the rear bumper protector body. 2. Align the side holes of the rear bumper protector body with the drilled holes of the rear bumper. 3. Attach each side of the rear bumper protector body by firmly applying pressure to the surface of the rear bumper protector body. 	
	Be careful not to touch or contaminate the surface of the adhesive tape.	

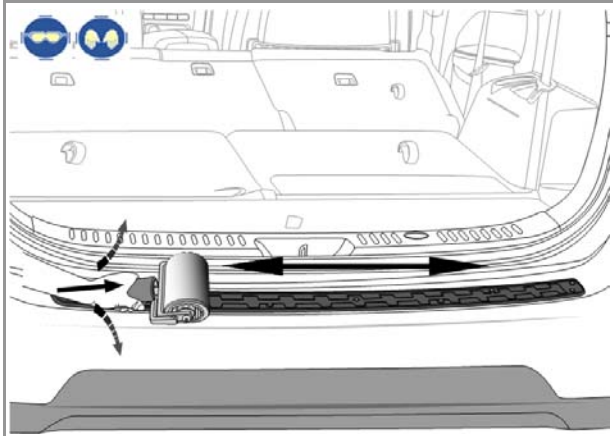


		11
NOTE	<ol style="list-style-type: none"> 1. Completely peel away all of the adhesive tape backings from the rear bumper protector body. 2. Lightly attach the central area of the rear bumper protector body to the rear bumper by applying pressure to the surface. 	
	Be careful not to touch or contaminate the surface of the adhesive tape. Make sure the installation temperature of the rear bumper protector body & bumper is between 60°F & 110°F.	



	Rivet Gun	12
NOTE	<ol style="list-style-type: none"> 1. Insert the remaining four (4) provided rivet pins through the four (4) rear bumper protector body side holes and rear bumper as shown. 2. Beginning at the center (sequence 1), use a rivet gun to rivet all nine (9) pins following the remaining sequence as shown in the drawing above. 	
	Be careful not to damage the surface of the bumper or the rear bumper protector body while riveting.	

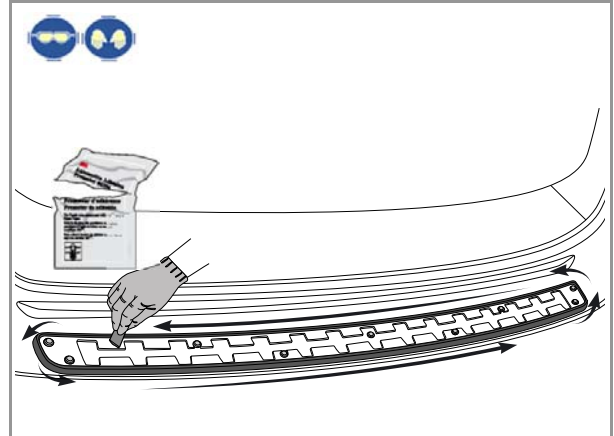
KIA Genuine Accessories



Rubber Roller or Clean Cloth **13**

NOTE


- Using a rubber roller or clean cloth, begin from the center of the rear bumper protector body and pass over it 3-5 times while applying constant pressure to ensure a solid attachment.

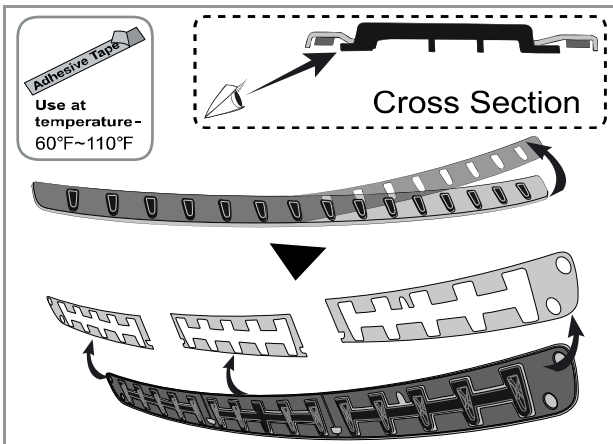


14

NOTE

- Apply promoter to the inner surface of the rear bumper protector body (within the recess), as shown in the drawing.
- Allow the promoter to dry for a minimum of 60 seconds.


 Make sure the promoter does not contact any other part or area of the rear bumper protector body. Promoter may cause skin irritation if it is contacted with bare skin.

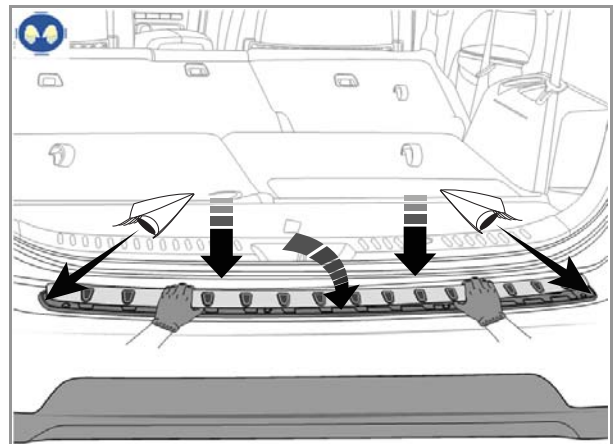


15

NOTE

- Make sure all of the rubber pads are fully installed into the rear bumper protector cover.
- Remove the protective film from the top of the rear bumper protector cover.
- Completely peel away the three (3) backings from the adhesive tape of the rear bumper protector cover.


 Be careful not to touch or contaminate the surface of the adhesive tape. Make sure the installation temperature of the rear bumper protector body and cover is between 60°F & 110°F.



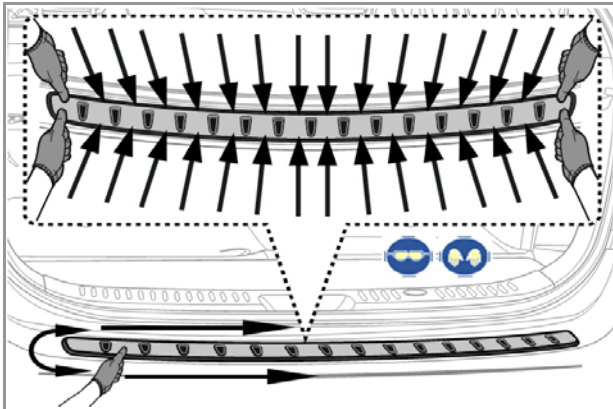
Gloves **16**

NOTE

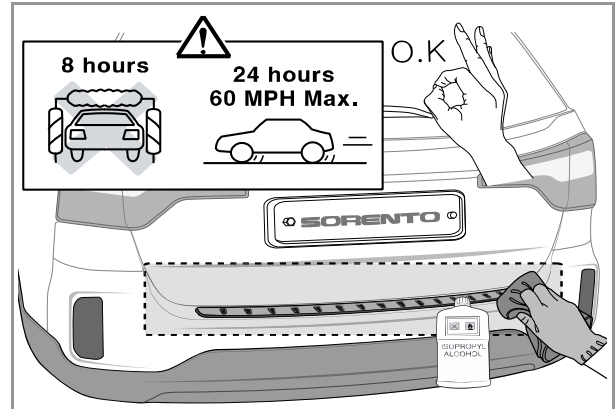
- Wearing gloves, align the rear bumper protector cover to both outside edges and lower groove line of the rear bumper protector body as shown in the drawing.
- Make sure that the rear bumper protector cover is properly aligned.

 Be careful not to touch or contaminate the surface of the adhesive tape. Make sure the installation temperature of the rear bumper protector body and cover is between 60°F & 110°F.

KIA Genuine Accessories



		17
NOTE	<p>1. While aligning the rear bumper protector cover on the rear bumper protector body, make sure the gaps on each side are equal (not to exceed 0.3mm), and the tolerance between rear bumper protector body and top edge of rear bumper protector cover should not exceed 0.5mm.</p> <p>2. Firmly press around the perimeter of the upper and lower groove areas using your fingers as shown for a minimum of two (2) minutes.</p>	



	50/50 Mix of Isopropyl Alcohol (70%) & Water and Clean Cloth	18
NOTE	<p>1. Clean the rear bumper and rear bumper protector with a 50/50 mix of isopropyl alcohol (70%) & water and a clean cloth, as shown in the drawing.</p> <p>2. Installation is complete.</p>	
	<p>* Do not drive the vehicle at high speed (no more than 60mph) within 24 hours after installation.</p> <p>* Do not use machine car wash within 8 hours after installation.</p>	